



Before we start your exam today, please take a moment to read over the information below. While these tests are optional, Dr. Ruan highly recommends they all be part of your routine eye exam so you will receive the most comprehensive exam we provide.



RightEye Functional Vision Testing (EyeQ) \$65

What is it?

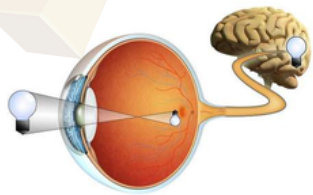
A 5-minute, non-invasive test that measures critical dynamic vision skills such as eye tracking and coordination.

What does it test for?

It analyzes your eye movement, brain processing, and reaction time. It enables us to pinpoint functional vision and brain health issues, identifies the root cause of reading problems and helps athletic performances.

Why should I be tested?

30% of people have visual tracking problems and 1/4 children have vision related learning problems such as poor visual coordination or concentration. A customized treatment plan can be developed after the test- if needed.



Macular Pigment Optical Density (MPOD) \$65

What is it?

A biomarker technology that assesses the level of macular pigment-internal defense of UV and blue light.

What does it test for?

It determines the thickness of protective pigments around the macula- part of the eye responsible for central vision and fine focusing. Lower pigment may be inclined to poor contrast, poor quality of vision, glare and increase risk of macular diseases.

Why should I be tested?

UV and Blue light are harmful to the eye. MPOD testing can help identify people at risk, assist detection and prevention at early age.



Digital Retina Photography & Tomography (OCT) \$65

What is it?

A precise 3D scan of the inside eye structure to reveal underlying eye health problems.

What does it test for?

The image records the well-being of the retina, optic nerve & blood vessels. It allows us to evaluate your eye in layers and depths

Why should I be tested?

Highly recommends to everyone and annually. It helps early diagnose of potential sight-threatening diseases such as glaucoma, diabetes. It also highlights birth defects and myopia related retina diseases.



Advanced Analysis of the Tear Film (TBUT) \$65

What is it?

A fast and comfortable measure of the stability of tear film- the key of clear vision and protection from infection & allergy.

What does it test for?

Identifies the causes of dry eye syndromes and ocular surface irregularity. Quick tear evaporation causes blurry, discomfort and damages of unprotected eye structures.

Why should I be tested?

Dry eyes affect children and teenagers. Prolonged screen time, allergies, and poor nutrition can be some of the causes. This test evaluates the type and severity of dry eye.



☐ **YES, I WOULD LIKE TO GET ALL FOUR TESTS DONE TODAY FOR THE PACKAGE DISCOUNT PRICE OF \$155.**

☐ **YES, I AM CONCERNED WITH MY VISION AND EYE HEALTH, HOWEVER, I WOULD ONLY LIKE TO DO SOME OF THE TESTS TODAY FOR THE LISTED PRICE ABOVE (FOR ONE TEST), OR A DISCOUNTED PRICE OF \$110 FOR (TWO TESTS), OR \$135 FOR (THREE TESTS) (PLEASE INDICATE WHICH TESTS YOU WOULD LIKE TO HAVE DONE TODAY).**

EYEQ

MPOD

OCT

TBUT

